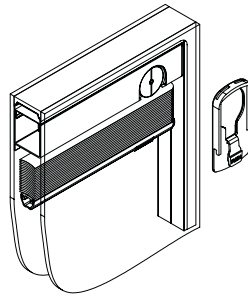


TOP

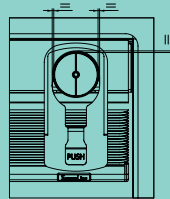
Caution!

Although the system is equipped with an automatic release device, keep children away from the blind loop cord operating mechanism.



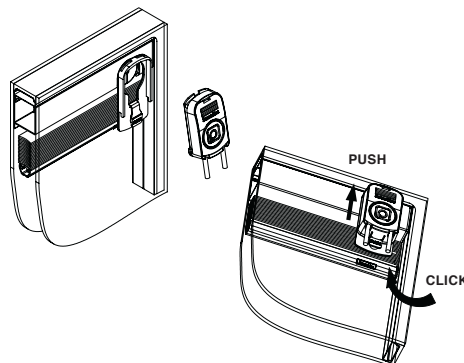
Application of external magnetic device

- 1** Clear the area where the magnet is to be positioned from possible traces of silicone, dust or dirt.

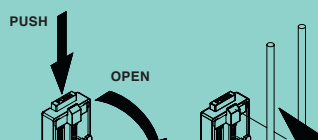


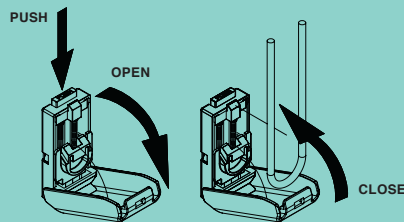
- 2** Stick the self-centring base plate to the glass surface such that the cut-out in the base is perfectly aligned with the internal magnet. **CAUTION!**

Do not use any other kind of glue or silicon instead of the double-sided adhesive tape provided. Fit the double glazing unit into the frame so that the self-centring base plate does not conflict with the glazing bead or with the gasket, if any.



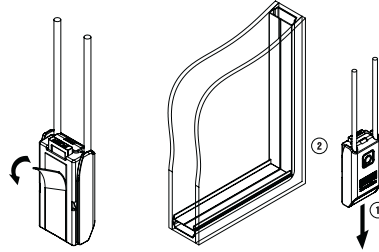
- 3** Slide the magnetic housing unit into the self-centring base plate, pushing the former upwards until it is correctly locked, as confirmed by the click of the "Push" button.



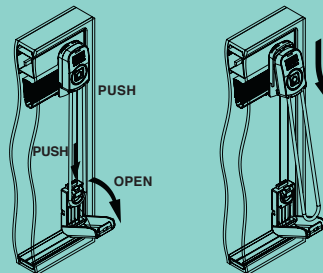


Application of cord tensioner

- 4 Thoroughly clean the area where the cord tensioner will be applied.
- 5 Open the cord tensioner by pressing the "Push" button located at the top; position the cord over the tensioner slide, ensuring the cord is not twisted and the spring is not under tension. Close the cover plate.



- 6 Remove the protective film from the cord tensioner, and with the cord under slight tension stick the cord tensioner to the glass. CAUTION! When adjusting the blind, please move the cord only parallel to the glass.



Removal of external magnetic device from glass

- 7 Remove the cover plate from the cord tensioner by pressing the "Push" button and release the cord; press the "Push" button of the magnetic housing unit and remove it.

