

Profile system

- Frameless all-glass slide and turn system
- Option of flush or weathered bottom track
- The flush bottom track is particularly suitable for use in „Barrier-free dwellings“ according to DIN 18 025
- Panels can be stacked open either internally or externally
- Opening of panels by sliding to one side or to both sides
- Optionally with or without lateral vertical frame profiles
- Height variations can be compensated by a height compensation profile

Tests

- Airborne sound insulation $R_w = 22$ dB according to DIN EN ISO 140-3
- Airborne sound insulation $R_w = 34$ dB according to DIN EN ISO 140-3 with gap gaskets
- Measurement of deflection class 3 according to DIN EN 12211/12210 (8, 10 mm glass)
- Repeated pressure/wind suction class 3 according to DIN EN 12211/12210 (8, 10 mm glass)
- Safety test class 3 according to DIN EN 12211/12210 (8, 10 mm glass)

Fittings

- All fittings are concealed within the profiles
- Low-maintenance, non-corroding and failsafe fittings
- Inside and/or outside locking and unlocking possible
- Locking and unlocking via pull rod or turning knob
- Optionally with lever lock („child-proof“)

Running assembly

- Top running, low-maintenance horizontal running assemblies, each equipped with two rollers
- The running assemblies feature each three smooth-running needle bearings and two carbon fibre reinforced polyamide rollers
- Running assemblies out of stainless steel metal components
- Low-noise, low-wear, heat and cold resistant running surfaces
- Running assemblies pivot at any angle between 90° and 180°

Sealing and ventilation

- Gap of approximately 1-3 mm between the panels
- PVC gap gaskets (optional)
- Brush gaskets are fitted horizontally at the top and bottom on the inside and outside
- Lower and upper brush gaskets are attached to the panel frames and not to the bottom track

Glazing

- 6, 8, 10 and 12 mm tempered safety glass panes (ESG-H)
- Panes secured via concealed screw-fixing system in top and bottom panel profiles
- Subsequent replacement of panes without difficulty
- Subsequent replacement of panels without difficulty

Drainage

- Unpressurised drainage via inclined floor construction
- Integrated water drainage channel on inside of bottom track
- End-caps for lateral sealing of bottom track

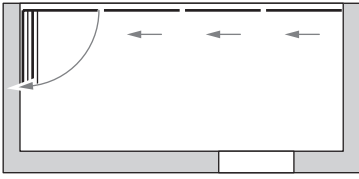


Test Report 40-31/13



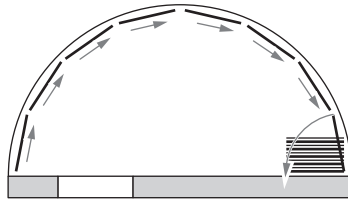
Test Report 1238-001-09
and 1238-002-09

Straight Systems

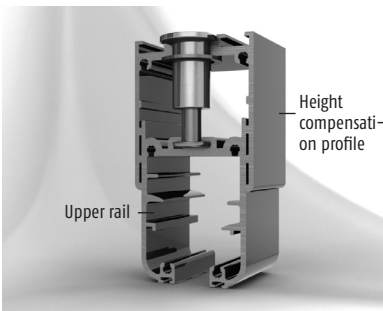
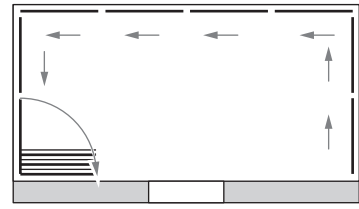


more special Systems on request

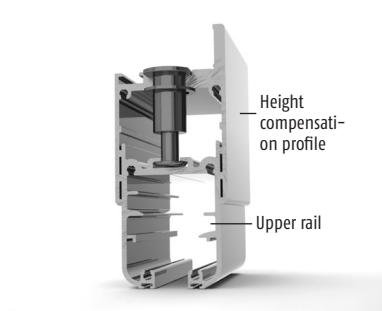
Segmented Systems



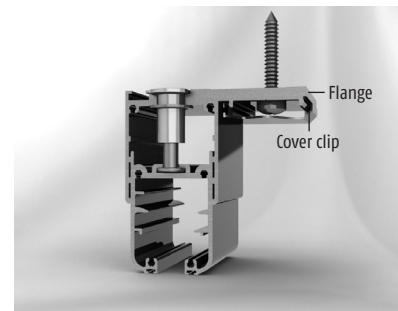
Angle Solutions 90°-180°



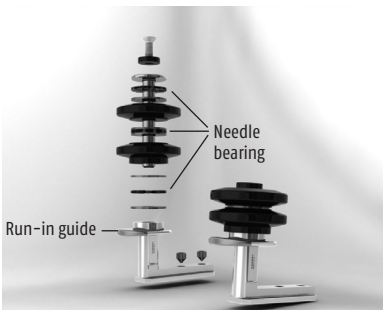
- Slightly arched running surfaces for carriage to improve running features
- Modified height compensation profile allows an adjustment of up to 22 mm



- Height compensation profile with flange



- Height compensation profile with flange
- Screw cap with cover clip



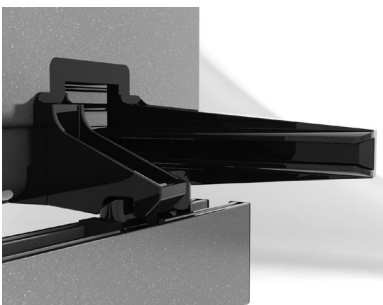
- Completely new, stainless carriage system
- Arched run-in guide



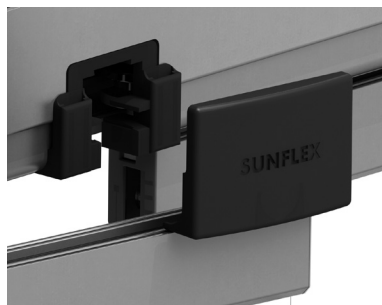
- New panel profile end caps for 6, 8 and 10 mm including pick-up for glass panel t-slot nut and cover clip fixing device
- Panel guidance for recessed floor rail



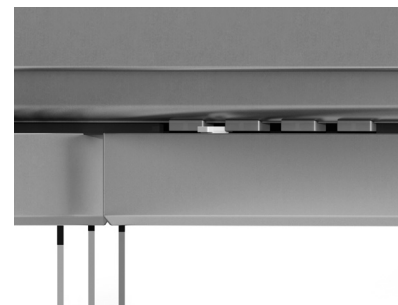
- Turning knob



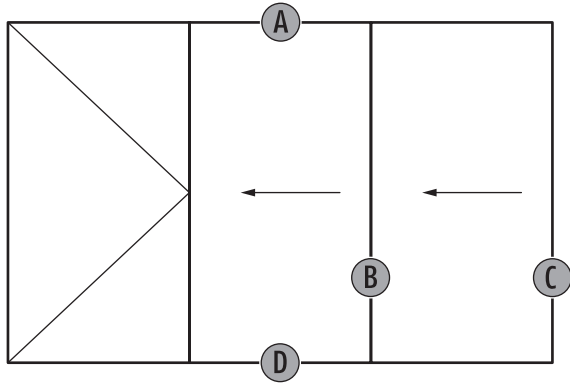
- Carriage recess including new gap ventilation



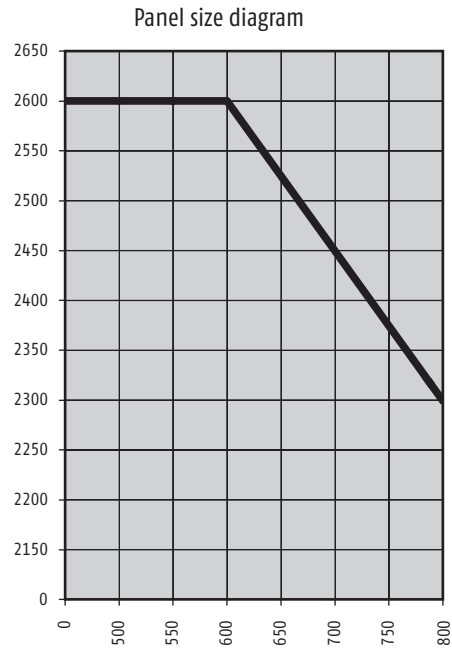
- Carriage recess optionally available without guide arm but with covering flap



- Optimal panel guidance without guide arm when opening and closing



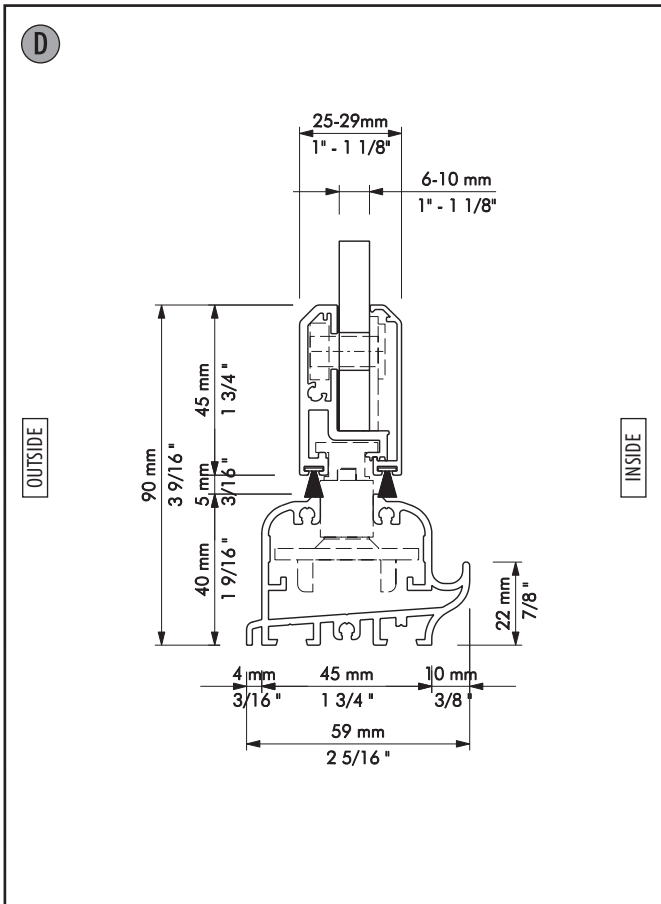
Details at uneven panel partitioning in one direction



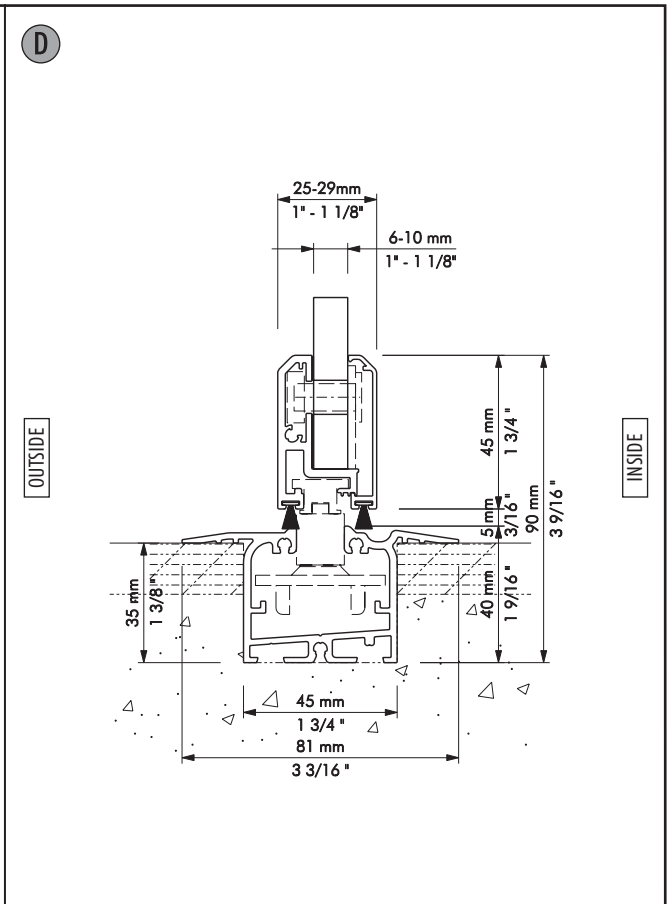
* For panel sizes exceeding 2600 mm – special inquiry

* Basis glazing 8 mm (25 kg/m²)

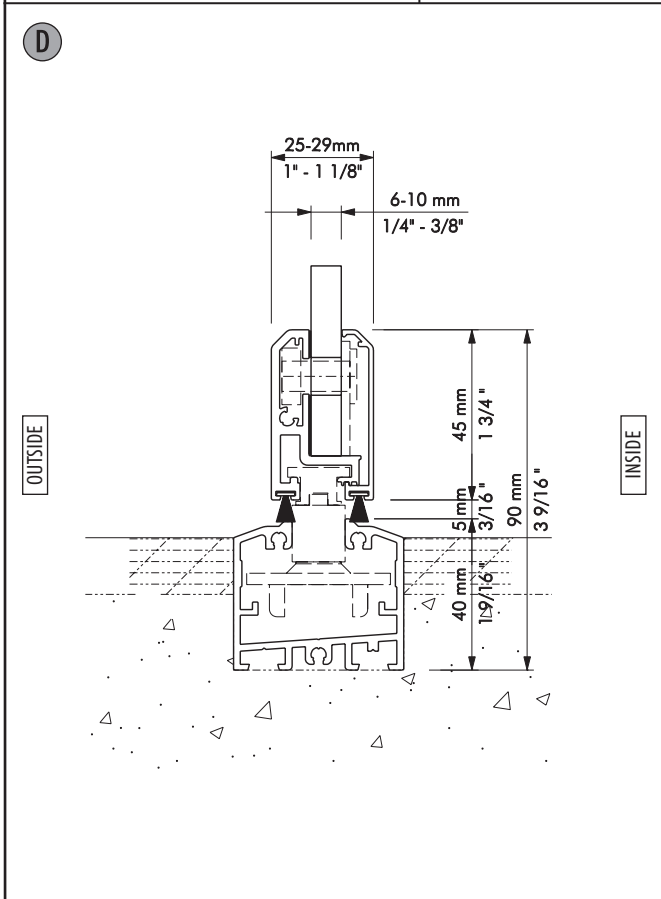
Ref.	Section	Description	Page
D	SF25-003	Vertical-Section, bottom track	4
D	SF25-006	Vertical-Section, flush bottom track	4
D	SF25-011	Vertical-Section, flush bottom track with support profile	4
D	SF25-010	Vertical-Section, bottom track	4
D	SF25-005	Vertical-Section, bottom track on balustrade	5
D	SF25-004	Vertical-Section, bottom track on balustrade and strengthening profile	5
A	SF25-001	Vertical-Section, top track	5
A	SF25-002	Vertical-Section, top track with height compensations profile	5
A	SF25-007	Vertical-Section, height compensation profile with flange - horizontal	6
A	SF25-008	Vertical-Section, overhead light connection with height compensation profile	6
A	SF25-009	Vertical-Section, height compensation profile with flange - vertical	6
C	SF25-101	Horizontal-Section, wall connection with rubber sealing profile	6
B	SF25-102	Horizontal-Section, panel - panel	7
B	SF25-103	Horizontal-Section, panel - panel 135°-bending	7
B	SF25-104	Horizontal-Section, panel - panel 90°-bending	7
C	SF25-105	Horizontal-Section, wall connection with profile	7



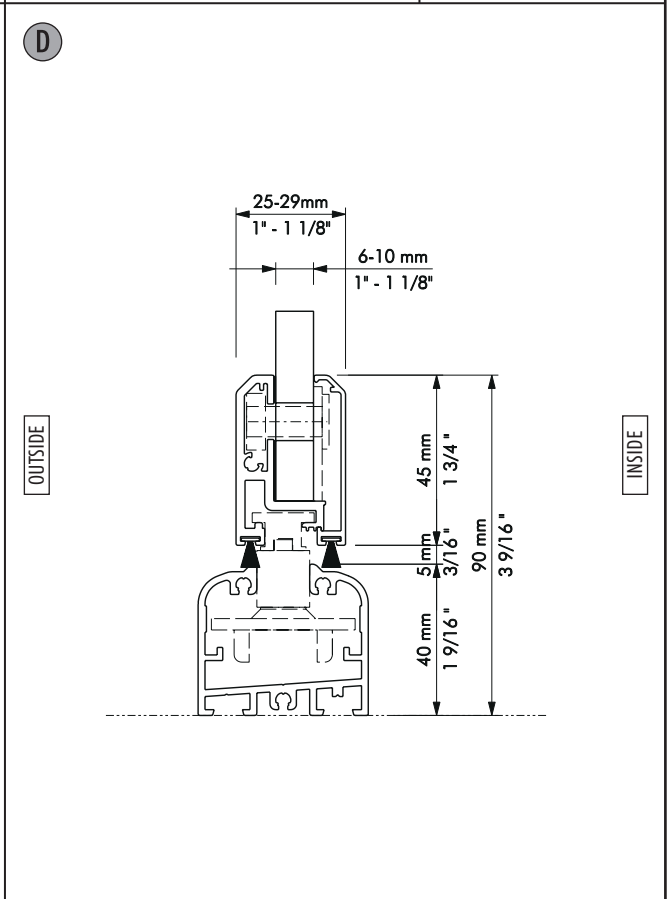
Description: Vertical-Section, bottom track	System: SF25
	Detail-No.: SF25-003



Description: Vertical-Section, flush bottom track	System: SF25
	Detail-No.: SF25-006

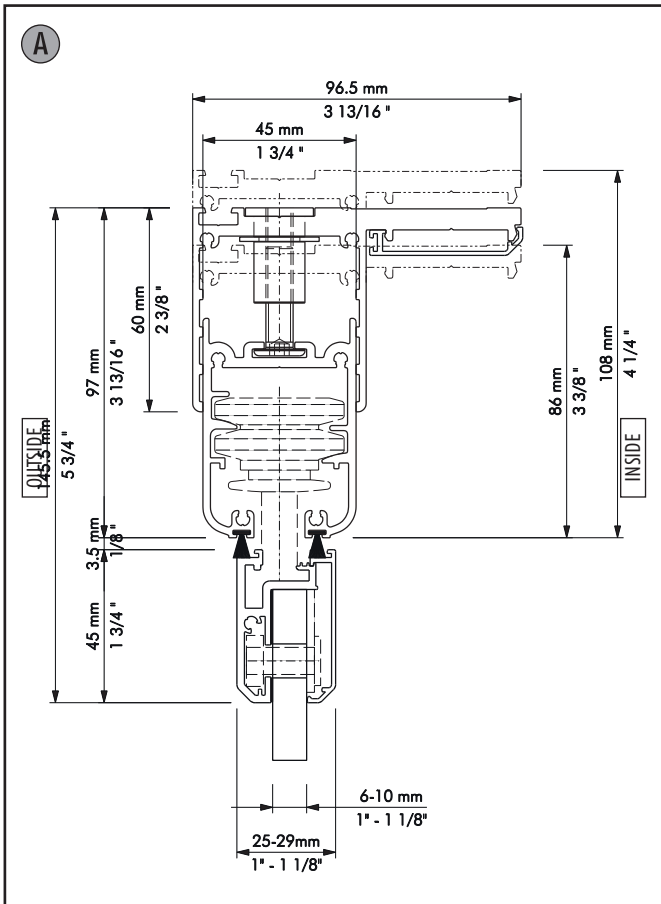


Description: Vertical-Section, flush bottom track with support profile	System: SF25
	Detail-No.: SF25-011



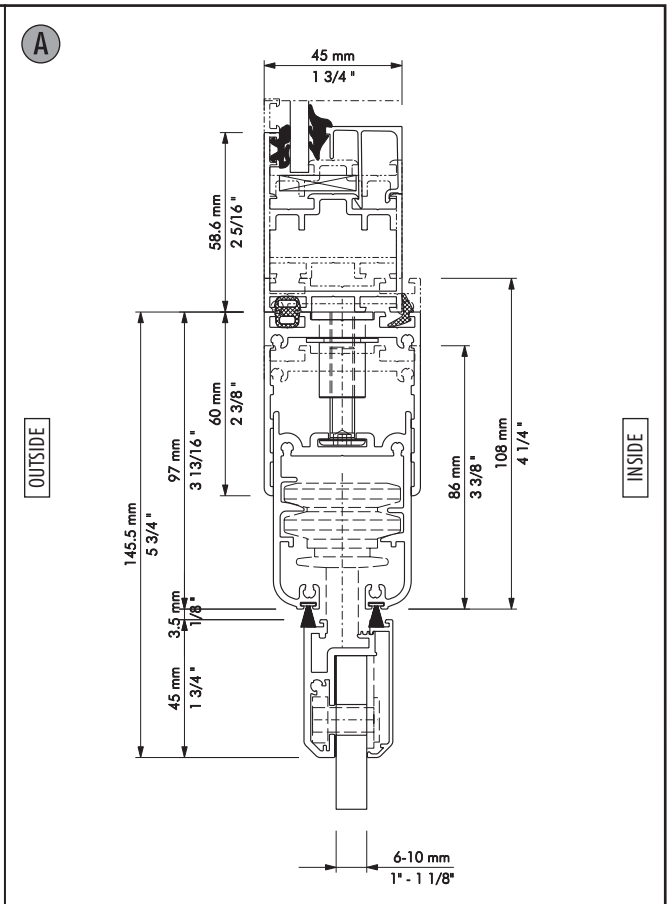
Description: Vertical-Section, flush bottom	System: SF25
	Detail-No.: SF25-010

<p>D</p> <p>OUTSIDE</p> <p>INSIDE</p>	<p>Description: Vertical-Section bottom track on balustrade</p> <p>System: SF25</p> <p>Detail-No.: SF25-005</p>	<p>D</p> <p>OUTSIDE</p> <p>INSIDE</p>	<p>Description: Vertical-Section, bottom track on balustrade and strengthening profile</p> <p>System: SF25</p> <p>Detail-No.: SF25-004</p>
<p>A</p> <p>OUTSIDE</p> <p>INSIDE</p>	<p>Description: Vertical-Section, top track</p> <p>System: SF25</p> <p>Detail-No.: SF25-001</p>	<p>A</p> <p>OUTSIDE</p> <p>INSIDE</p>	<p>Description: Vertical-Section, top track with height compensations profile</p> <p>System: SF25</p> <p>Detail-No.: SF25-002</p>



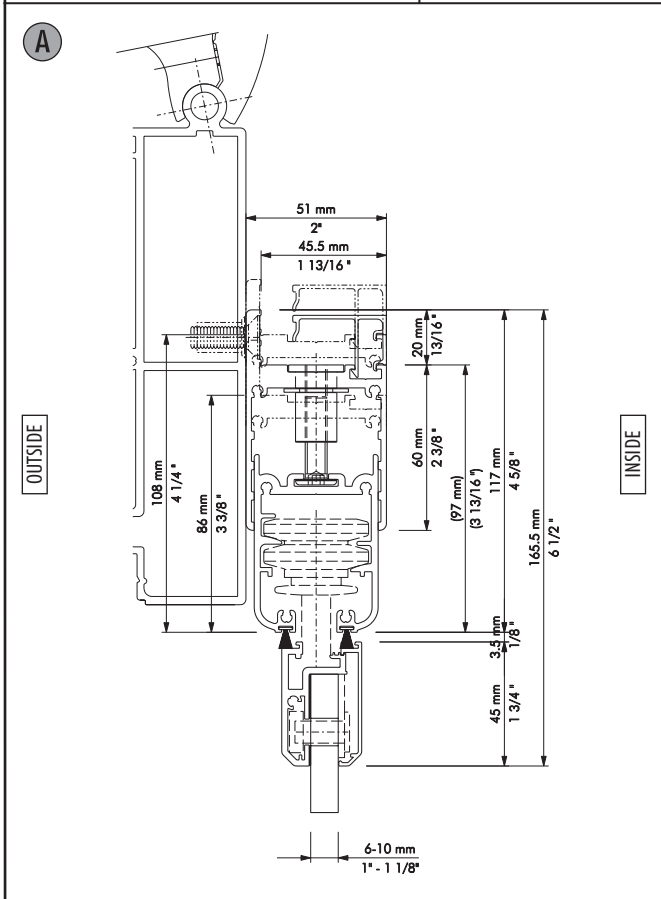
Description: Vertical-Section, height compensation profile with flange - horizontal

System: SF25
Detail-No.: SF25-007



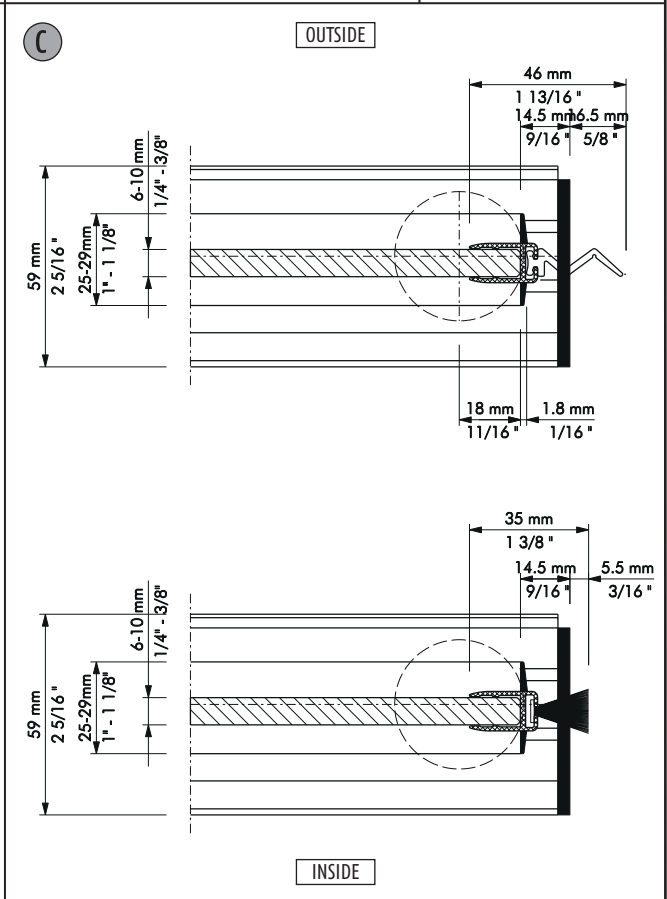
Description: Vertical-Section, overhead light connection with height compensation profile

System: SF25
Detail-No.: SF25-008



Description: Vertical-Section, Höhenausgleichsprofil mit Flansch - vertikal

System: SF25
Detail-No.: SF25-009



Description: Horizontal-Section, seitlicher Wandanschluss

System: SF25
Detail-No.: SF25-101

<p>B OUTSIDE</p> <p>INSIDE</p>	<p>B OUTSIDE</p> <p>INSIDE</p>		
<p>Description: Horizontal-Section panel - panel</p>	<p>System: SF25 Detail-No.: SF25-102</p>	<p>Description: Horizontal-Section panel - panel 135°-bending</p>	<p>System: SF25 Detail-No.: SF25-103</p>
<p>B OUTSIDE</p> <p>INSIDE</p>	<p>C OUTSIDE</p> <p>INSIDE</p>		
<p>Description: Horizontal-Section panel - panel 90°-bending</p>	<p>System: SF25 Detail-No.: SF25-104</p>	<p>Description: Horizontal-Section wall connection with profile</p>	<p>System: SF25 Detail-No.: SF25-105</p>

NewGlassTechnology

Where progress never stops

Tel: 003293955599

Fax: 003293955099

info@newglasstech.com

<http://newglasstech.com>